

Keep Our Waterfronts Working: A Legislative Update

Molly W. Jacobs
Office of Congressman Tom Allen
First District, Maine



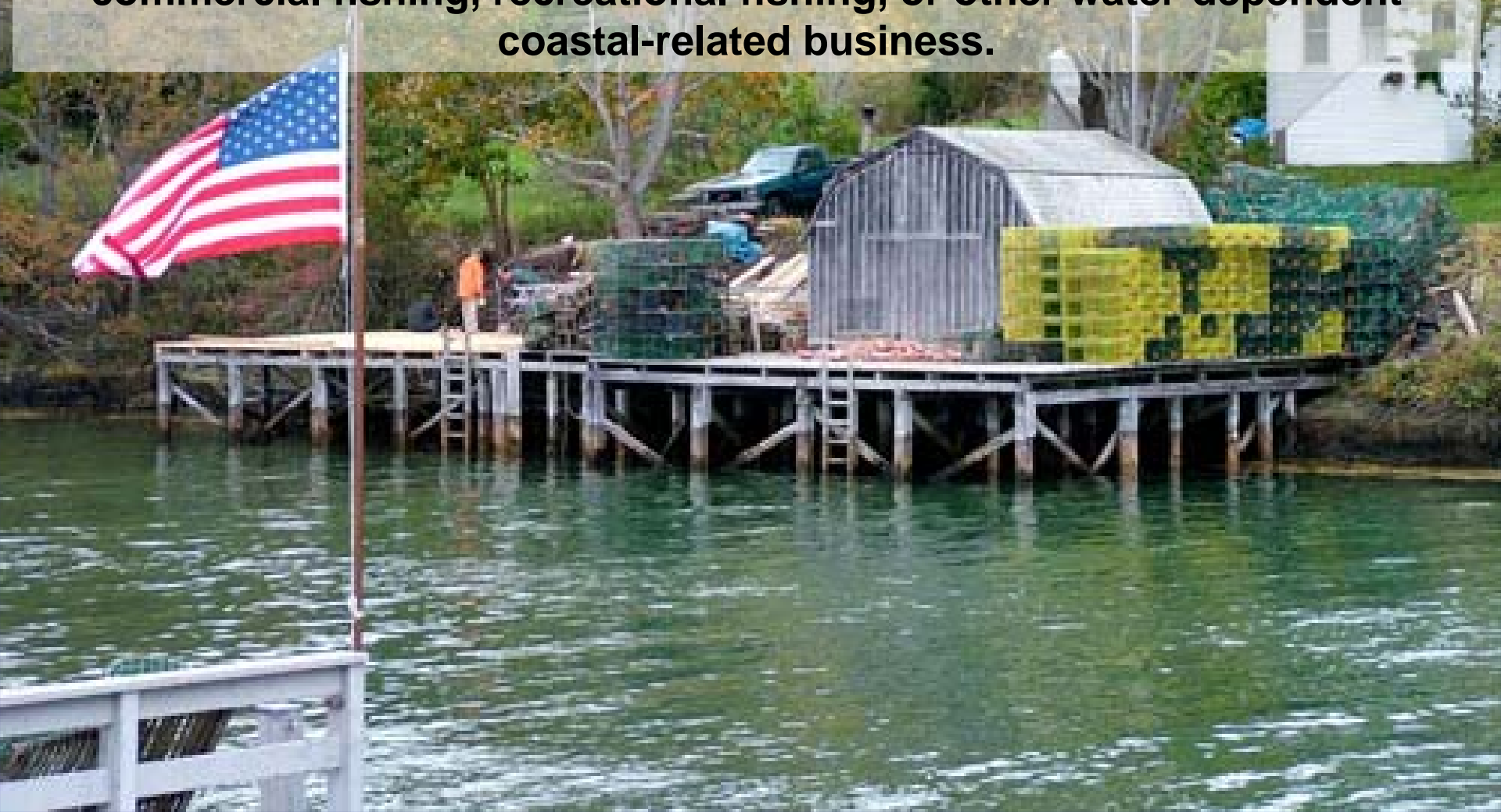
Rep. Tom Allen



Photo: Jen Litteral, Island Institute

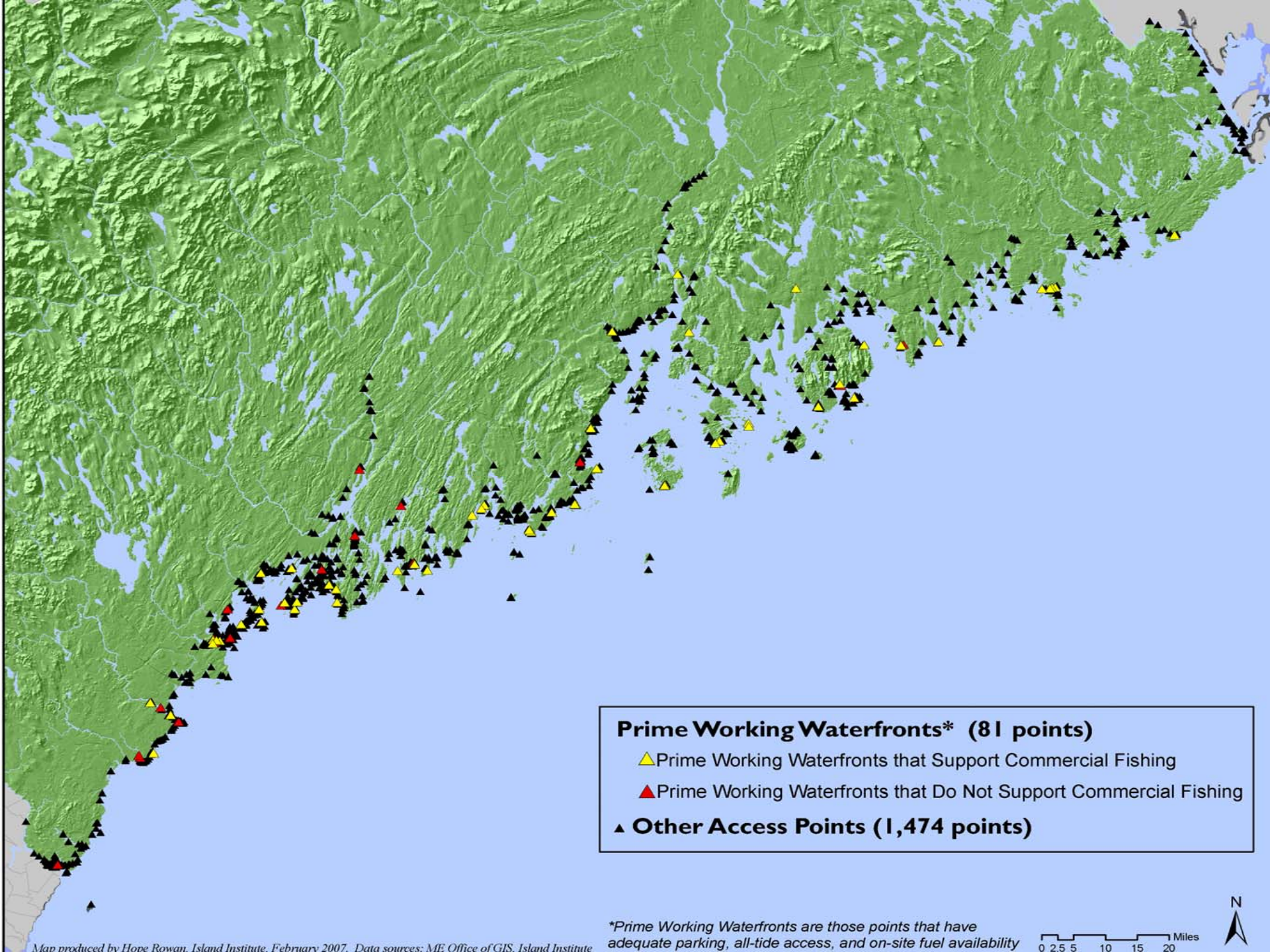
Working Waterfront:

Real property (including support structures over water and other facilities) that provides access to coastal waters to persons engaged in commercial fishing, recreational fishing business, or other water-dependent coastal-related business and is used for, or that supports, commercial fishing, recreational fishing, or other water-dependent coastal-related business.



- Of Maine's 5300 mile coastline, only 175 miles are sufficiently deep and sheltered enough to support working waterfront
- Maine's coastline currently contains 1555 saltwater access points. 1045 of these currently provide working waterfront access, for a total of 20 miles.
- Of these, only 81 access points (~1.5 miles) provide "prime" working waterfront (adequate parking, all-tide access, on-site fuel availability).
- Of these, 62 access points currently support commercial fishing.



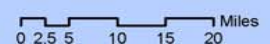


Prime Working Waterfronts* (81 points)

- ▲ Prime Working Waterfronts that Support Commercial Fishing
- ▲ Prime Working Waterfronts that Do Not Support Commercial Fishing

▲ Other Access Points (1,474 points)

*Prime Working Waterfronts are those points that have adequate parking, all-tide access, and on-site fuel availability



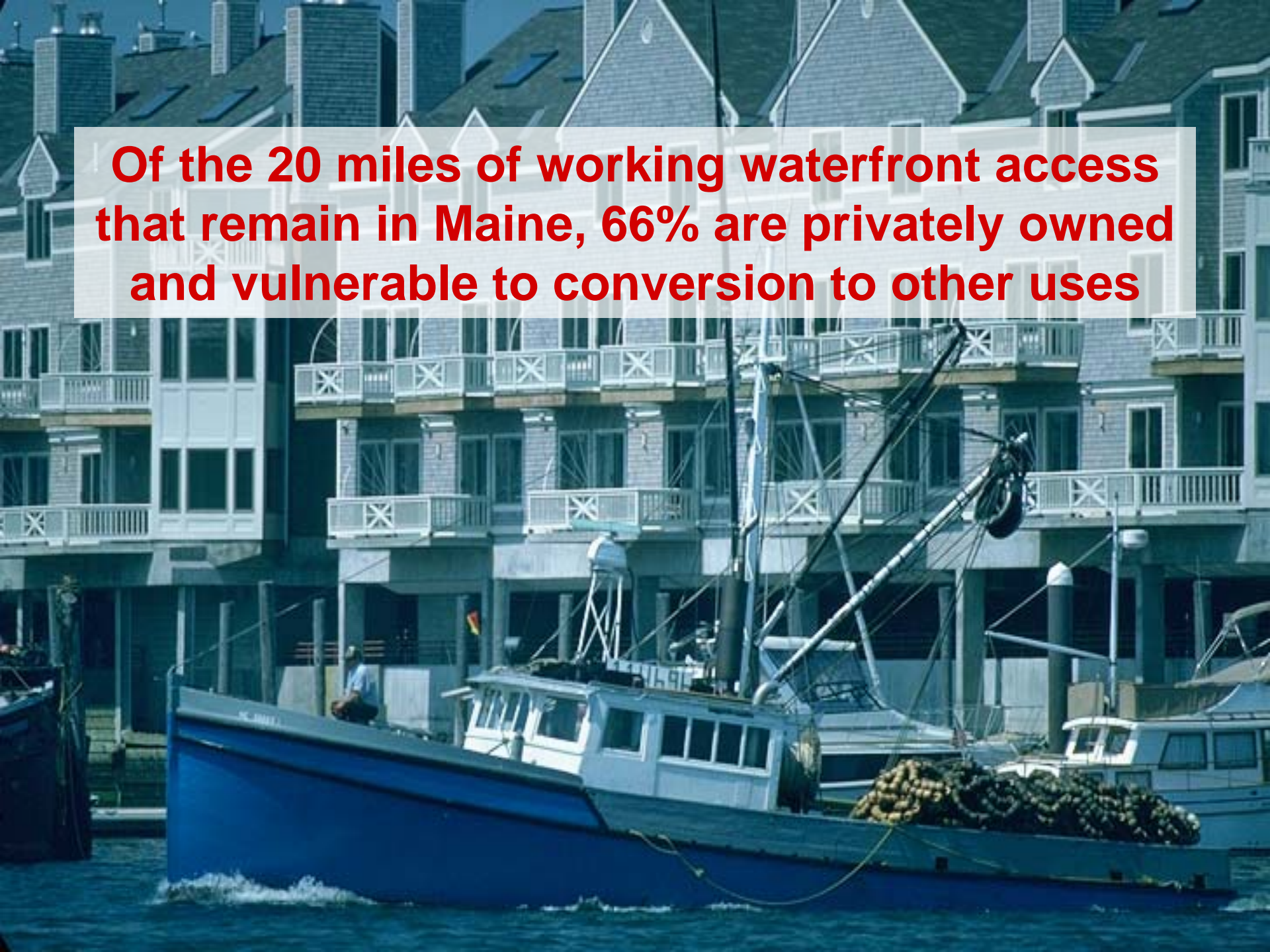
How important are Working Waterfronts?

- **Commercial fishing alone supports 39,000 jobs and contributes over \$750 million in state revenue.**
- **Tourism, recreational fishing and boating, boat-building, shipping, aquaculture...**



- **History and tradition: working waterfronts are the economic and cultural heart of many coastal communities**

Of the 20 miles of working waterfront access that remain in Maine, 66% are privately owned and vulnerable to conversion to other uses



Formation of the Working Waterfront Coalition

The Working Waterfront Coalition is a broad-based collaboration of more than 140 members from industry associations, nonprofits, state agencies, and individuals who advocate for Working Waterfronts

The mission of the WWC is to support and enhance Maine's working waterfront communities through:



Policy

Planning

Investment

Education

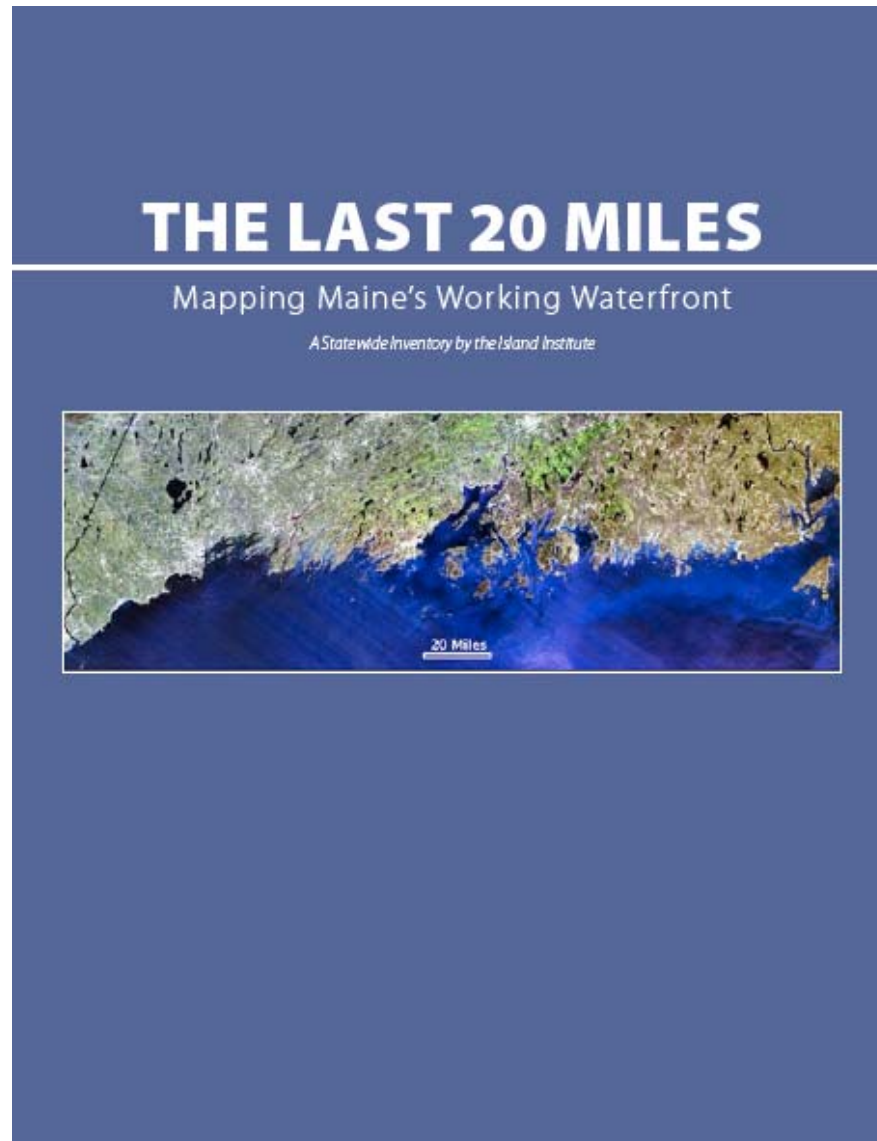
Toolbox Approach to Help Preserve Working Waterfronts



The WWC has developed a toolbox of programs to provide coastal communities with ways to address their specific waterfront pressures, include:

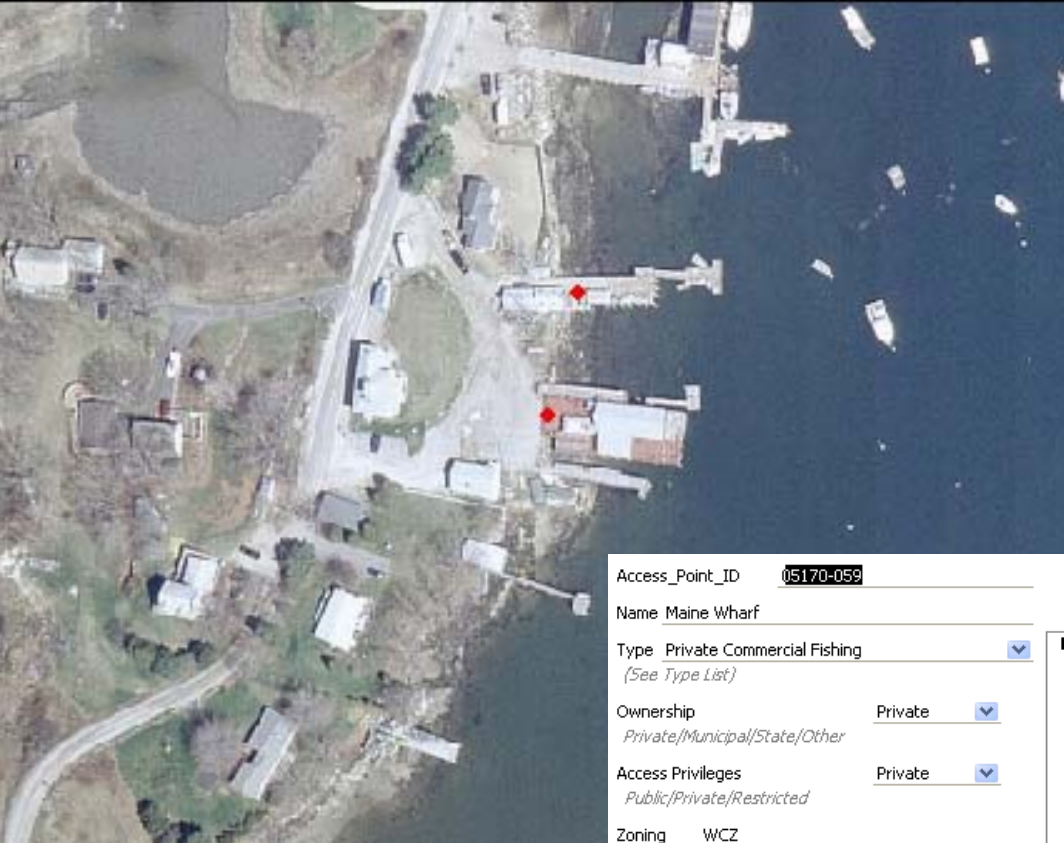
- Current Use Taxation for Working Waterfronts
- Bond Programs to Purchase Working Waterfront Land
 - Working Waterfront Covenant
- Creating Partnerships to Access Investment Services
 - Land Use Research

GIS Mapping Publication



<http://www.islandinstitute.org> (Resources)

Data Collection



Access_Point_ID 05170-059

Name Maine Wharf

Type Private Commercial Fishing
(See Type List)

Ownership Private
Private/Municipal/State/Other

Access Privileges Private
Public/Private/Restricted

Zoning WCZ

105 Facility (USCG) Y/N

Critical Fishing Infrastructure Y/N

Uses

Commercial Fishing Y/N Y

Residential Y/N

Transportation Y/N Y

Recreation Y/N Y

Aquaculture Y/N

Education Y/N

Commercial Non-Fishing Y/N

Marine Construction Y/N

Public Safety Y/N

Industrial Y/N

Other Y/N

Primary Usage CF
(One of the Above or Mixed)

Town Portland

Map Lot 030 D001



Features

Accessible at all Tides Y/N Y

Road Access Poor/Fair/Good Fair

Parking Y/N/Limited Y

Commercial Fishing Parking Y/N Y

Boat Launch Ramp Y/N

Wharf Fixed
Fixed/Floating Year-Round/Floating Seasonal/NA

Wharf Condition Poor/Fair/Good Poor

Wharf Holds Light Vehicles Y/N Y

Wharf Holds Heavy Vehicles Y/N Y

Freight Y/N

Roll-on / Roll-off Y/N

Rail Service Y/N

Commercial Fishing Services

Buying Station Y/N Y

Fish Off-Loading Y/N Y

Fish Packing Y/N

Lobster Pound Y/N Y

Ice for Freezer Holds Y/N

Bait Y/N

Net Repair Y/N

Gear Loading Allowed Y/N

General Services

Fuel Y/N

Power Y/N

Water Y/N

Pump Out Facilities Y/N

Waste Oil Disposal Y/N

Hauling Capability Y/N

Hauling Capacity *(Tonnage)* 0

Winch or Boom Y/N

Dry Boat Storage Y/N

Repair Y/N

Supplies Both
Commercial/Recreational/Both/NA

Bathroom Y/N Y

General Store Y/N Y

Restaurant Y/N

Moorings Y/N

Short-term Rent Moorings Y/N

Transient Berthing Y/N

Comment:
Truck Conflicts

Working Waterfront Access Pilot Program

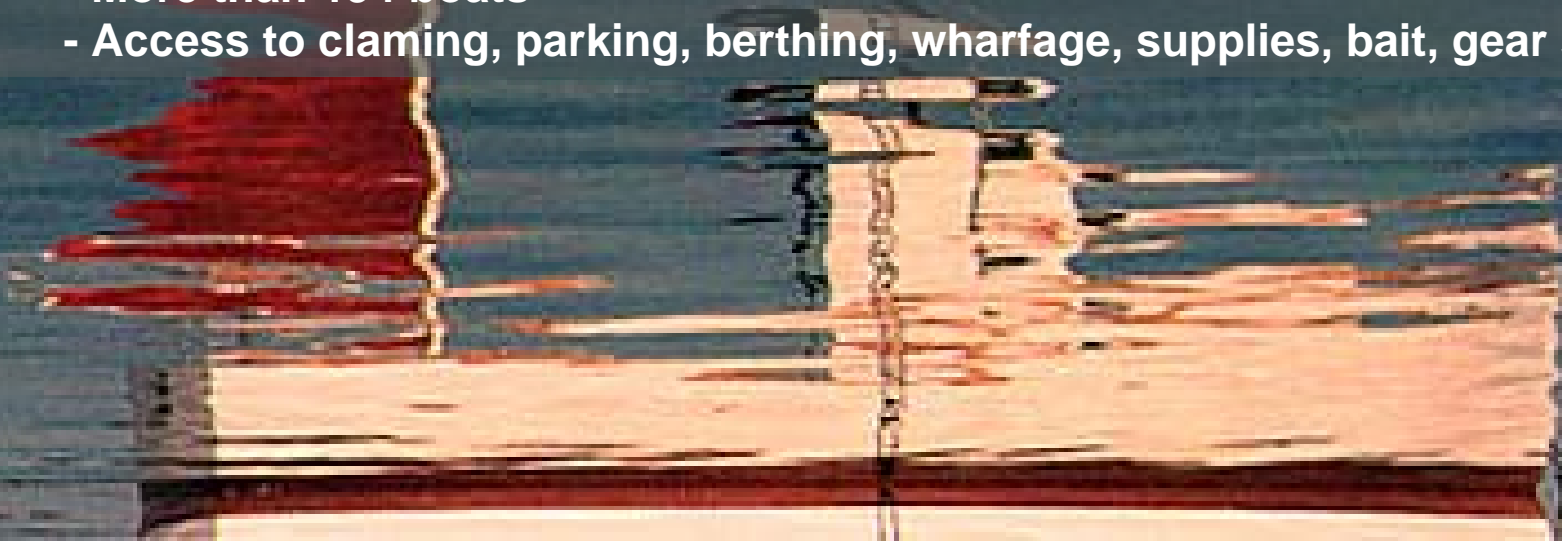
The Maine Department of Marine Resources (DMR) announces the availability of funding aimed at securing waterfront land with the facilities, capacity, and services needed to support commercial fisheries businesses and activities. Through a competitive application process matching funds are available to assist municipalities, commercial fisheries businesses, and other interested parties in securing these resources. The DMR has created a Working Waterfront Team consisting of Coastal Enterprises Inc. and the Island Institute to work directly with applicants to ensure their project fits the program criteria and to develop a complete application.

Criteria

1. The **economic significance** of the property to the commercial fisheries industry;
2. The availability of **alternative working waterfront properties** in the vicinity;
3. The **degree of community support** for the proposed investment;
4. The **level of threat of conversion** to uses incompatible with commercial fisheries businesses; and
5. The **utility of the proposed property** for commercial fisheries business.

Working Waterfront Access Pilot Program Round 1

- **\$1.3 million preserved 6.82 acres of Working Waterfront property.**
- **Secure property with a fair market value of over \$4 million.**
- **Applicants included two municipalities, a fishing co-op, a private commercial fisheries business, a land trust, and a community-based nonprofit.**
- **Leveraged an additional \$1.9 million in the form of bank loans, grants, foundation assistance, private donations, municipal support and other state programs.**
- **Round 1 of the Pilot Program will support:**
 - **More than 400 jobs**
 - **More than \$7.5 million in income directly dependent on working waterfronts**
 - **More than 194 boats**
 - **Access to clamming, parking, berthing, wharfage, supplies, bait, gear storage.**



Why a national legislative solution?



State resources are limited

All citizens have a stake in Working Waterfronts

Our Approach

1. Outreach to stakeholders in Maine
2. Outreach to the national Working Waterfront community
3. Consultation with NOAA, House Natural Resources Committee
4. Consultation with state and national industry and advocacy organizations





Rep. Tom Allen

The Keep Our Waterfronts Working Act H.R. 3223

Designed as an amendment to the Coastal
Zone Management Act

Two major components: planning grants
and implementation grants



H.R. 3223: The Keep Our Waterfronts Working Act

1. Planning Grants

Coastal States may apply for planning grants to develop strategic and prioritized plans for the preservation, expansion, and improvement of working waterfronts

- Where is working waterfront present and absent, and where is it under threat of conversion to other uses?
- What is the economic, social, and cultural value of working waterfront to the coastal state?
- What is the current availability and potential for expansion of public access to coastal waters in working waterfront areas?



H.R. 3223: The Keep Our Waterfronts Working Act

2. Implementation Grants

Once planning grants are approved, states will be eligible to apply through an expedited process for federal matching grants to implement their Working Waterfront Plans.

Allowed Uses

- Acquisition of working waterfront or interest in working waterfront.
- Improvements to working waterfront

Requirements

- Working Waterfront Covenants
- Match of at least 25%
- Public access expansion or improvement



H.R. 3223: The Keep Our Waterfronts Working Act

Bill Status

- Introduced in July
- Under consideration by the House Committee on Natural Resources, Subcommittee on Fisheries, Wildlife, and Oceans
- Positive feedback from the Committee and from NOAA
- Working to recruit cosponsors



Thank You!



Representative Lois Capps (CA)

Jen Litteral (Island Institute)

Jim Connor (Maine SPO)

Kathleen Leyden (Maine SPO)

Deirdre Gilbert (Maine DMR)

Hugh Goldthwaite (CEI)

Tom Murray (Sea Grant)

Ryck Lydecker (Boats.US)

Dylan Jones (NMMA)

Dave Jansen

House Committee on Natural Resources

Keep Our Waterfronts Working: A Legislative Update

Molly W. Jacobs
Office of Congressman Tom Allen
First District, Maine



Rep. Tom Allen



Photo: Jen Litteral, Island Institute