



THUNDER BAY

NATIONAL MARINE SANCTUARY

# Resource Protection through Access



**Jefferson Gray, Superintendent**

# NOAA's National Marine Sanctuaries

*“Areas of the marine environment with special conservation, recreational, ecological, historical, cultural, archeological, or esthetic qualities...”*

National Marine Sanctuary Act (sec. 301)



● National Marine Sanctuary

★ Marine National Monument



# 12,000 Years of Great Lakes Maritime History

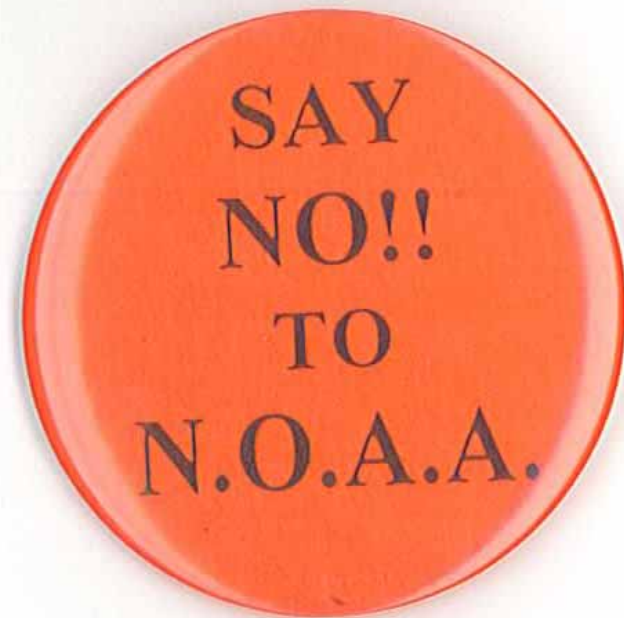




THUNDER BAY

NATIONAL MARINE SANCTUARY

## The Designation Process: *A Long Strange Trip (1991-2000)*





THUNDER BAY

NATIONAL MARINE SANCTUARY

## *General Concerns*



- Regulate fishing
- Limit public access
- Charge a user fee
- Change the terms of management after designation
- Interfere with state rights



# THUNDER BAY

NATIONAL MARINE SANCTUARY



- **Designated in 2000**
- **Jointly managed by NOAA and the State of Michigan**
- **448-square miles**
- **State Review of Designation**

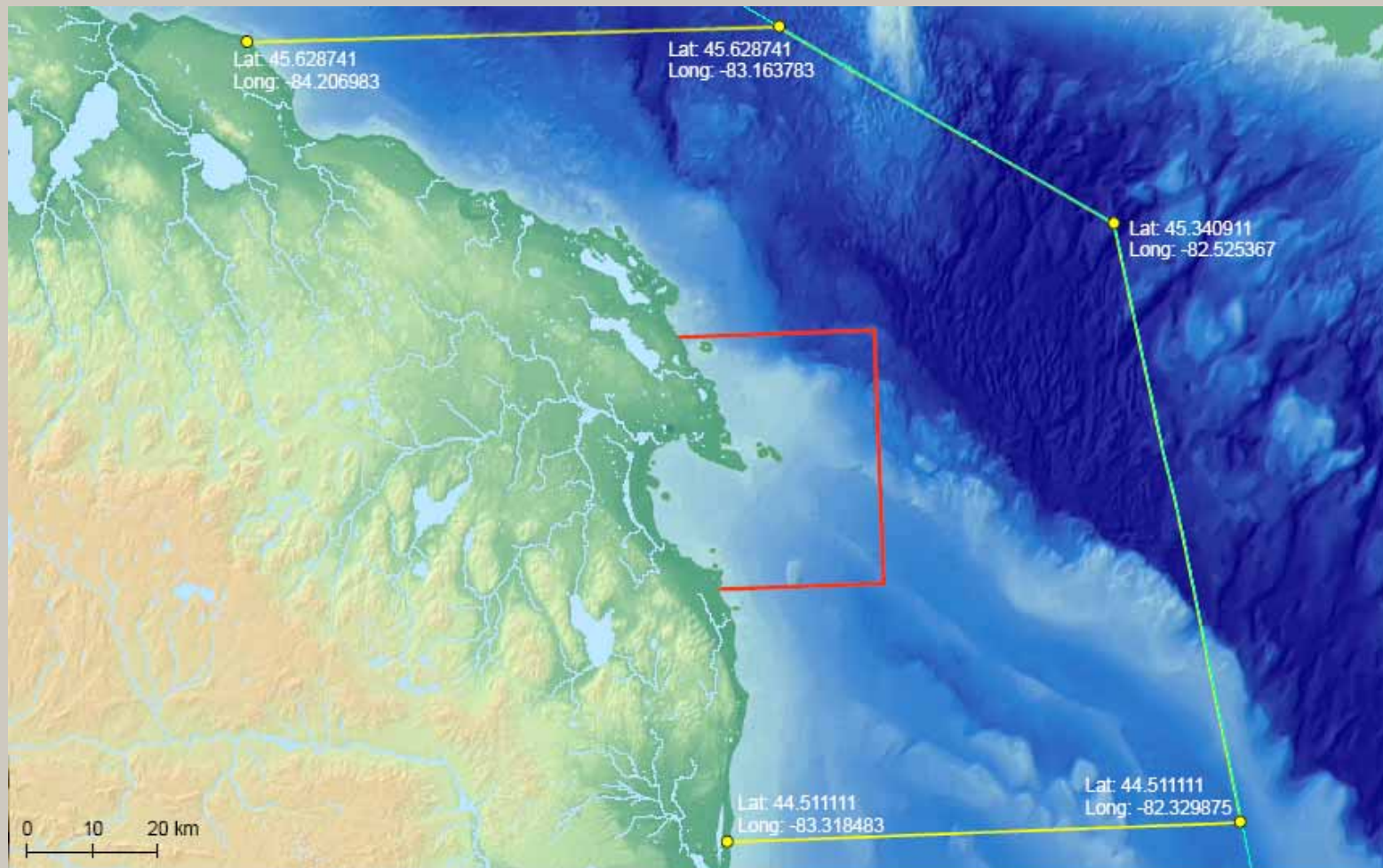




# THUNDER BAY

NATIONAL MARINE SANCTUARY

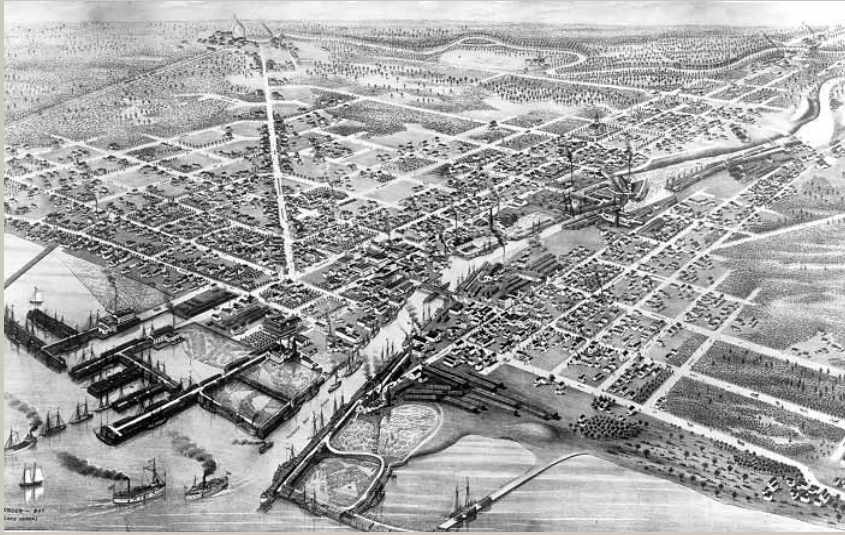
## *Access and Community Ownership Proposed Expanded Boundaries*





# THUNDER BAY

NATIONAL MARINE SANCTUARY



Factor	U.S.	Michigan	Alcona	Alpena	Pres. Isle
Population	303M	10,071,822	11,538	29,707	13,852
Jobless Rate	5.2%	7.8%	13.1%	10.2%	19.8%
B.A. +	24.4%	21.8%	10.9%	13.2%	11.5%
Med. Income	\$21,587	\$22,168	\$17,653	\$17,566	\$17,363

Source: U.S. Bureau of the Census, Census 2000 ; Mich. Department of Labor and Economic Growth, Feb. 2008



# THUNDER BAY

NATIONAL MARINE SANCTUARY

## *Resource Protection Through Access*

- Management Decisions
- Research and Monitoring
- Education and Outreach
  - The Resources





THUNDER BAY

NATIONAL MARINE SANCTUARY

## *Sanctuary Advisory Council*

- **Fishermen (2)**
- **Divers (4)**
- **Recreation (2)**
- **Tourism/Economic Development (4)**
- **Local officials (8)**
- **Historians (2)**
- **Educators (4)**
- **Citizens-at-Large (4)**





# THUNDER BAY

NATIONAL MARINE SANCTUARY

## *Management Plan Review (MPR)*

**MPR is a site-specific planning document that describes the objectives, policies, and activities for a sanctuary. They outline regulatory goals, describe boundaries, identify needs, set priorities and performance measures for resource protection, research, and education programs.**





THUNDER BAY

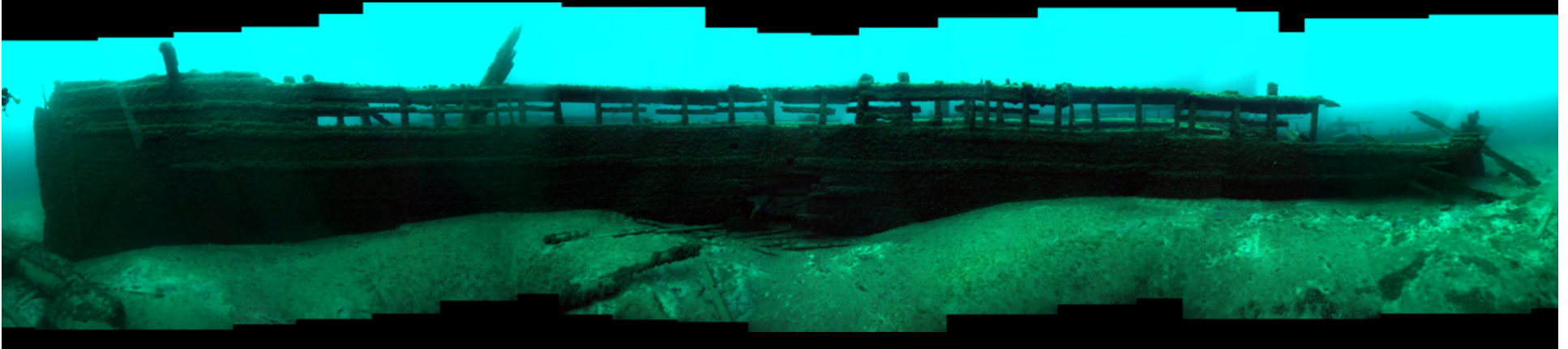
NATIONAL MARINE SANCTUARY

## *MPR: Charting the Future*

- **Funding**
- **Boundary Expansion**
- **Research & Monitoring**
- **Education & Outreach**
- **Resource Protection**
- **Sanctuary Operations**



*The Wetter the Better:  
Providing Access to Shipwreck Experiences*





THUNDER BAY

NATIONAL MARINE SANCTUARY



## Mooring Buoy Program

16 Sites in 2006

25 Sites in 2008

30+ Sites in 2009





THUNDER BAY

NATIONAL MARINE SANCTUARY

## *Great Lakes Maritime Heritage Trail*





THUNDER BAY

NATIONAL MARINE SANCTUARY

# *Great Lakes Maritime Heritage Center*





# THUNDER BAY

NATIONAL MARINE SANCTUARY





# THUNDER BAY

NATIONAL MARINE SANCTUARY

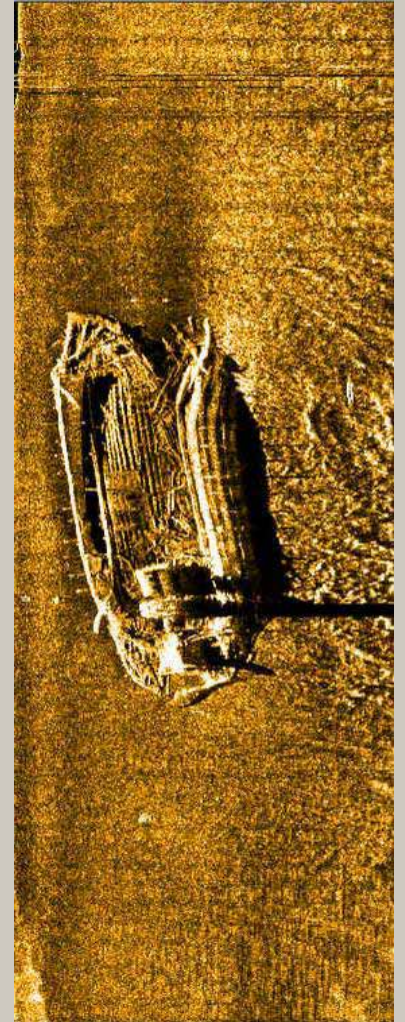
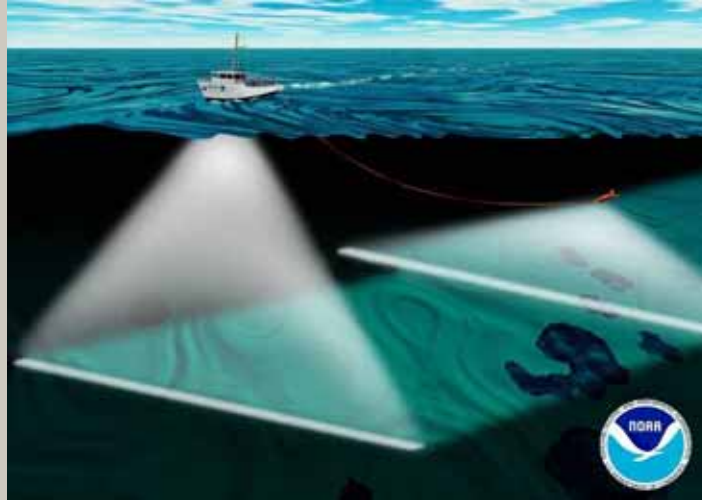




# THUNDER BAY

NATIONAL MARINE SANCTUARY

## *Access to Sanctuary Research*





# THUNDER BAY

NATIONAL MARINE SANCTUARY

**People value experiences that affect their lives in meaningful ways. By fostering strong personal connections through access, there is a greater public will for preservation. People protect what they value.**





# THUNDER BAY

NATIONAL MARINE SANCTUARY

## *Community Ownership*





THUNDER BAY

NATIONAL MARINE SANCTUARY

## Resource Protection and Enforcement



United States Coast Guard and Auxiliary  
Michigan Department of Natural Resources  
Michigan State Police

