

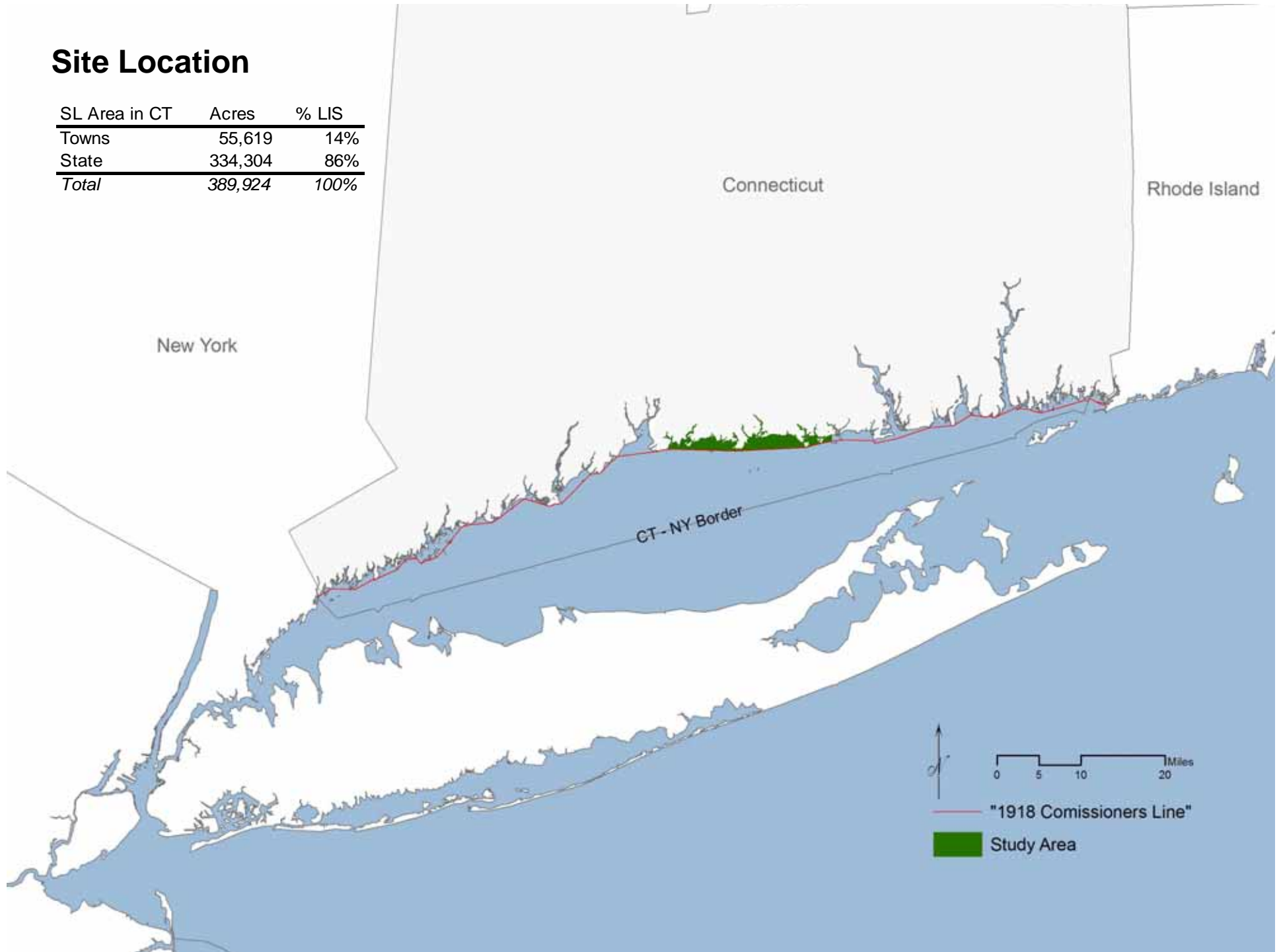


Exploring a New Strategy for Marine Protection:
Assessment of Law, Policy, Practice, and Spatial Data
Related to Private Conservation of Submerged Land
in Central Connecticut

Jules Opton-Himmel
The Nature Conservancy
Middletown, Connecticut
June 2008

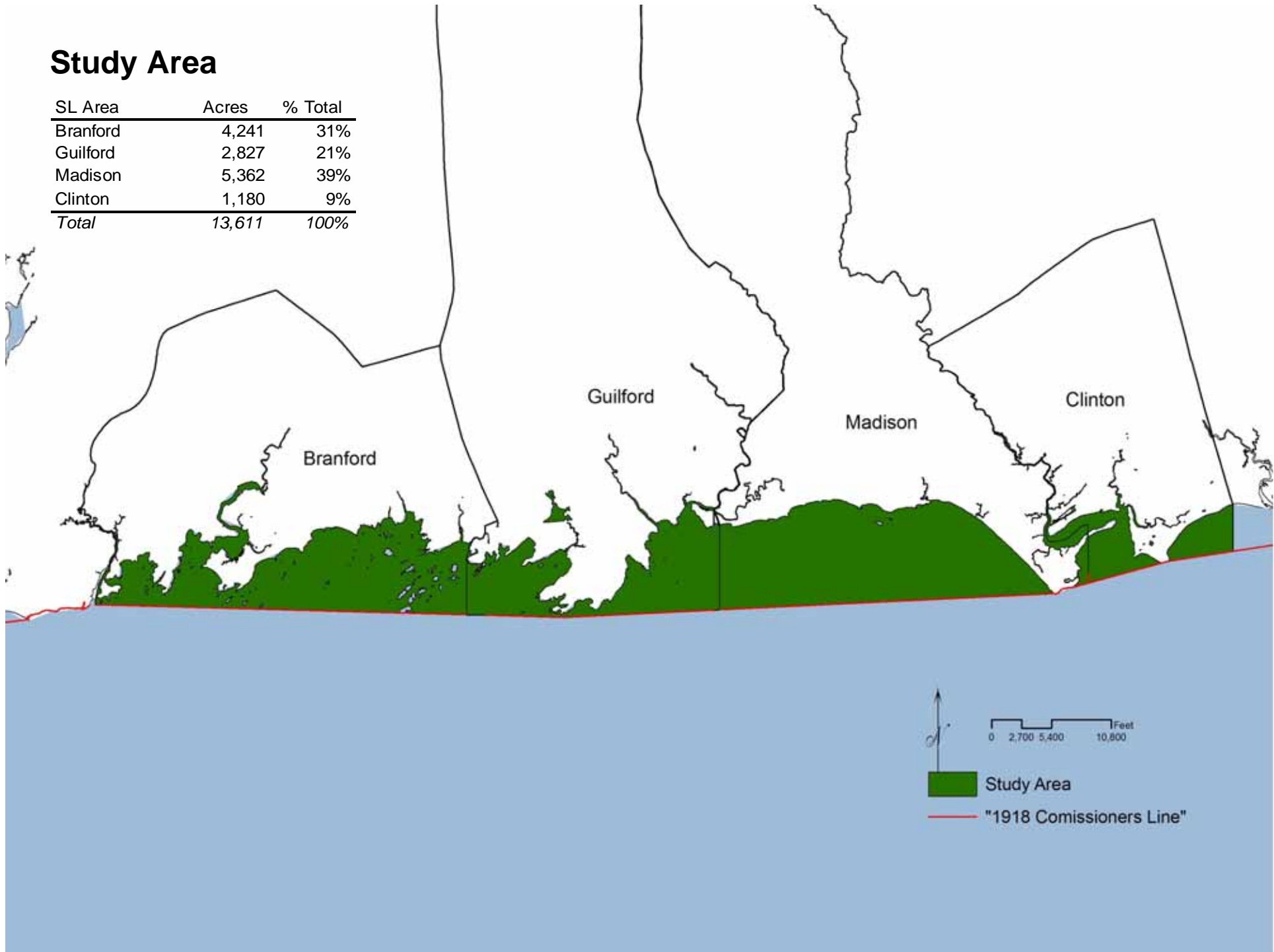
Site Location

SL Area in CT	Acres	% LIS
Towns	55,619	14%
State	334,304	86%
<i>Total</i>	<i>389,924</i>	<i>100%</i>



Study Area

SL Area	Acres	% Total
Branford	4,241	31%
Guilford	2,827	21%
Madison	5,362	39%
Clinton	1,180	9%
<i>Total</i>	<i>13,611</i>	<i>100%</i>

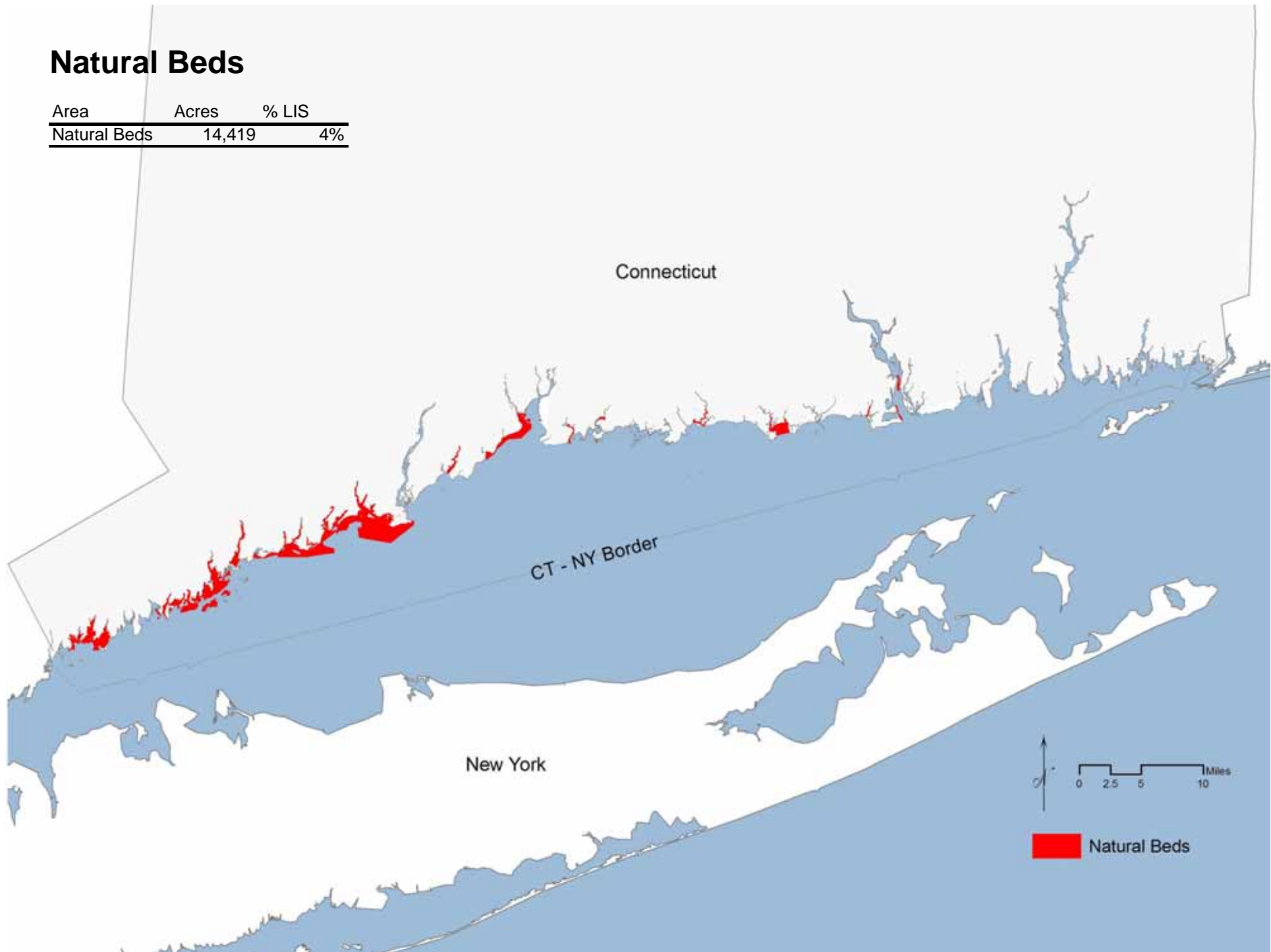


Public Trust Doctrine in CT

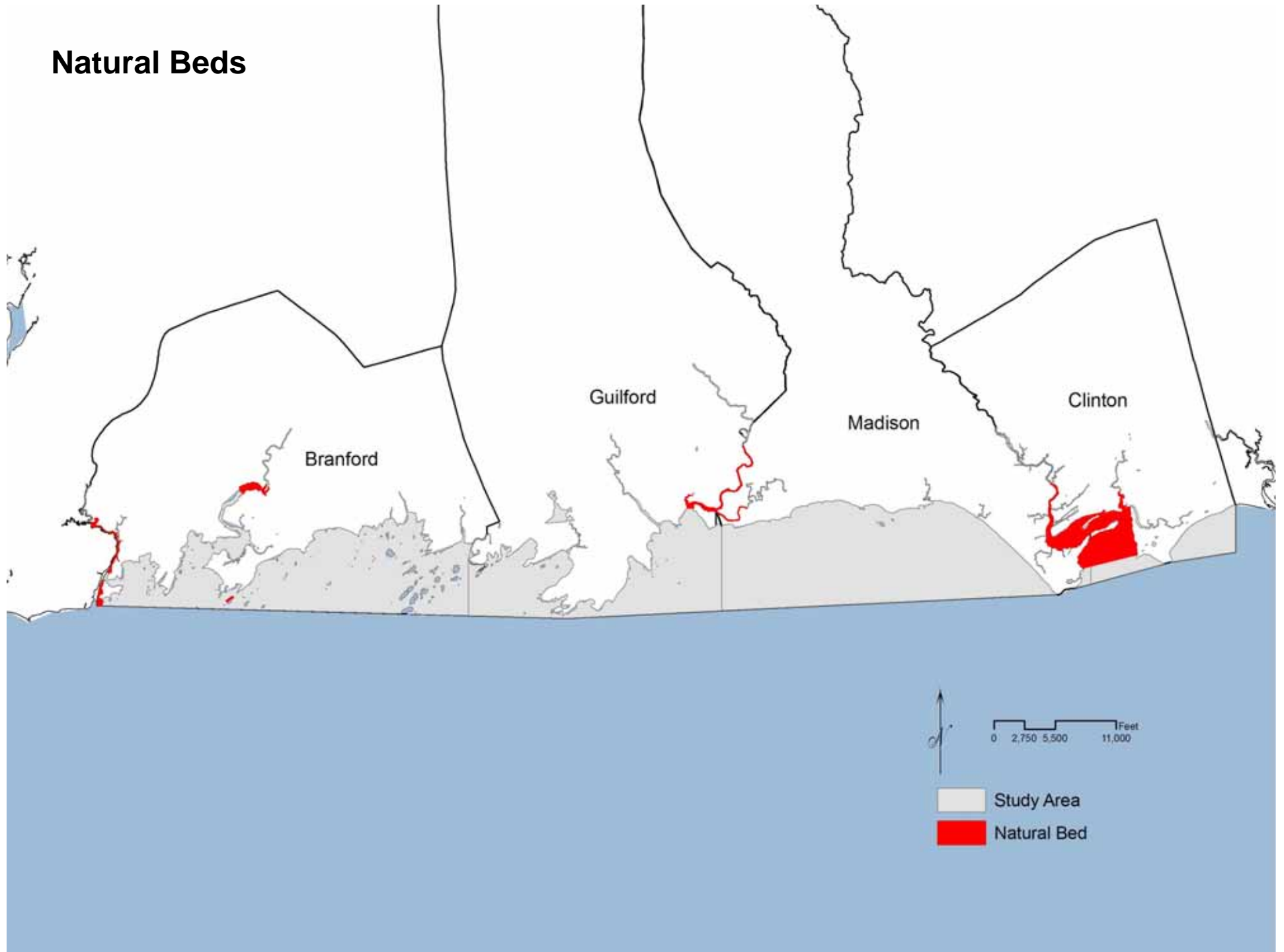
*“...“public trust resources” shall include, but not be limited to, the historic and broad boating use of said sound by the public, the right of the public to enjoy and explore the natural beauty of said sound by boat, the rights of the public and commercial fishermen to harvest fish and shellfish from said sound, **the protection of all natural resources of said sound that are held in trust by the state for the public, the stewardship and restoration of sites along the coast of said sound that contain important habitat or natural resources** and the protection of sites that provide opportunities for public enjoyment of said sound.”^[1]*

Natural Beds

Area	Acres	% LIS
Natural Beds	14,419	4%



Natural Beds

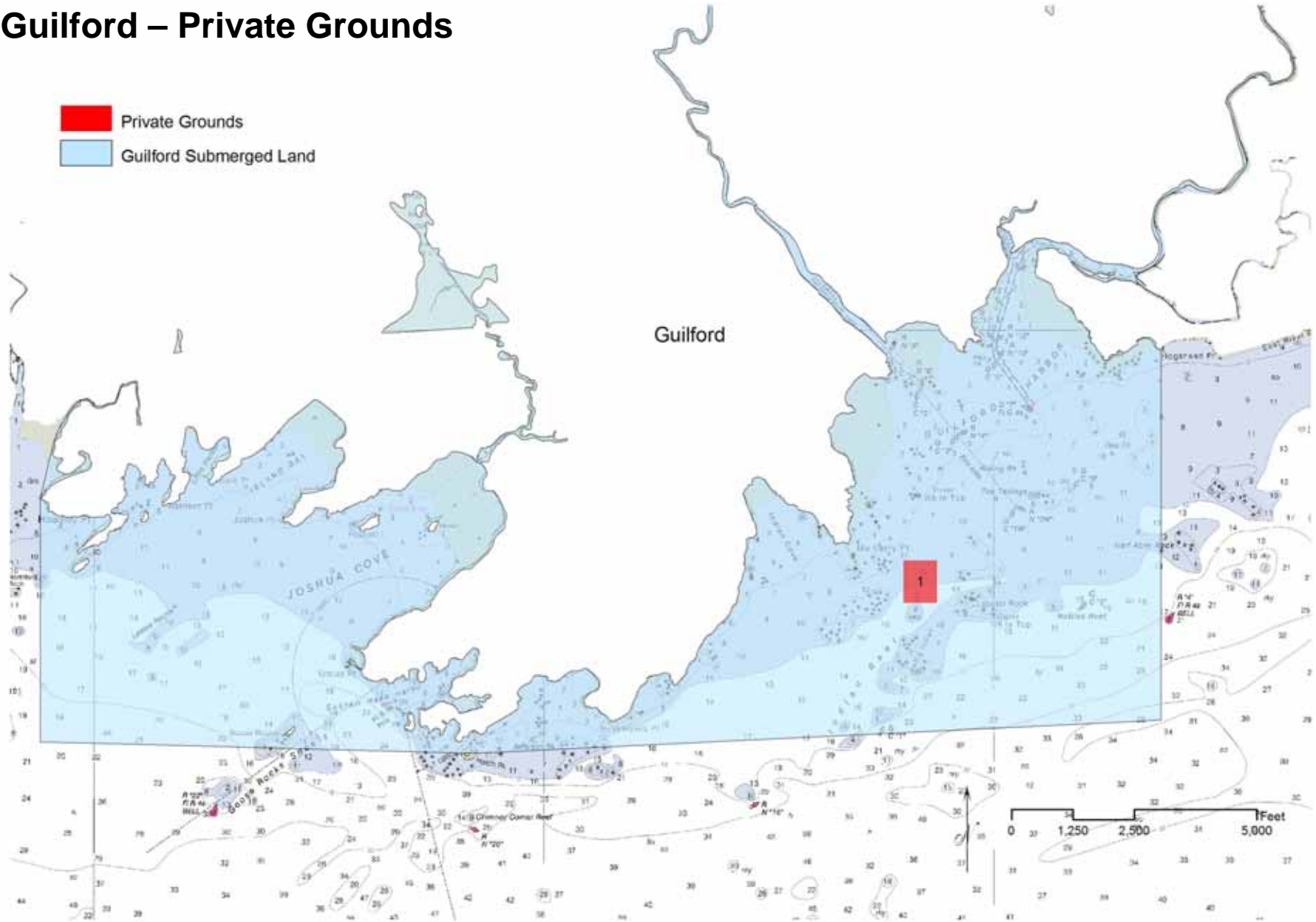


Private Shellfish Grounds

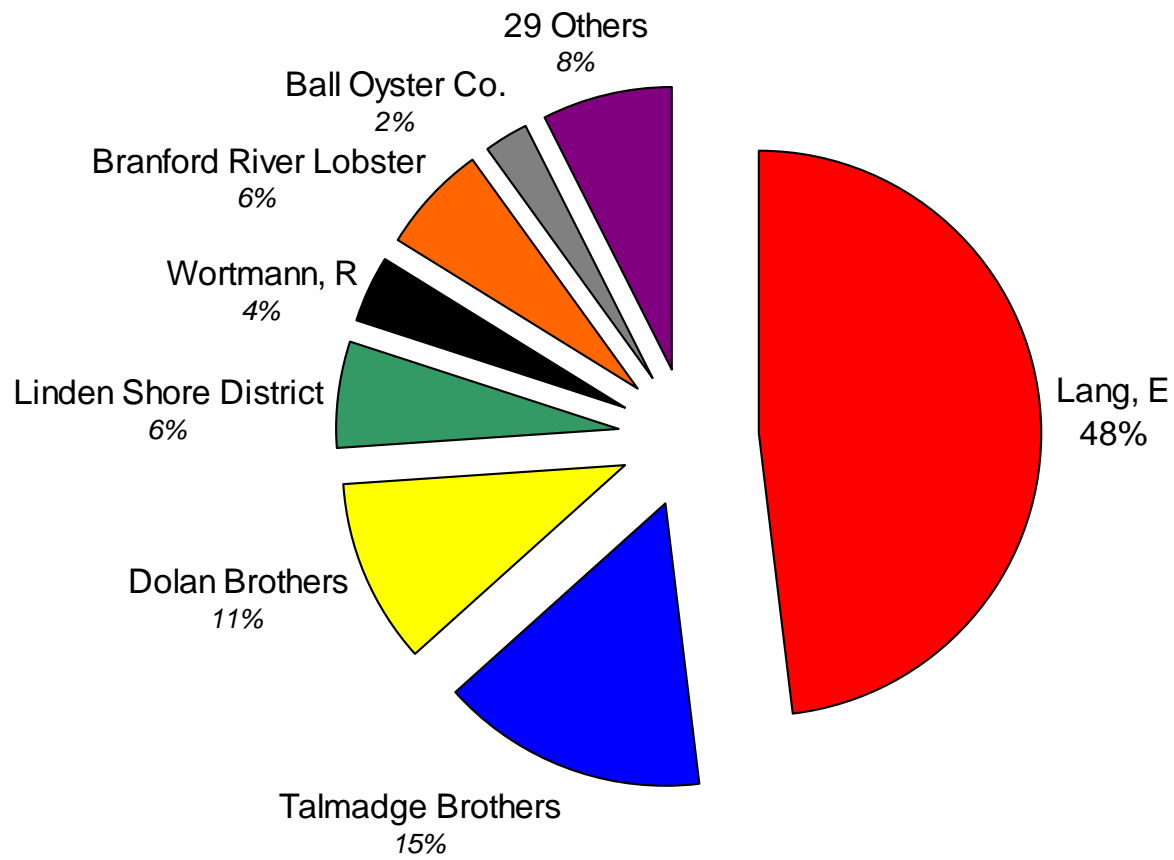
Town	<u>Study Area</u>		<u>Private Taxed Grounds</u>			<u>Private Untaxed Grounds</u>		
	acres	% of total	parcels	acres	% of total	parcels	acres	% of total
Branford	4,241	31%	260	1,922	45%	UNK	UNK	UNK
Guilford	2,827	21%	1	14	0.5%	UNK	UNK	UNK
Madison	5,362	39%	4	14	0.3%	~55	~970	~17%
Clinton	1,180	9%	12	12	1%	~17	UNK	UNK
Total	13,611	100%	277	1,962	14%	UNK	UNK	UNK

Guilford – Private Grounds

- Private Grounds
- Guilford Submerged Land



Owners of Private Grounds in Study Area

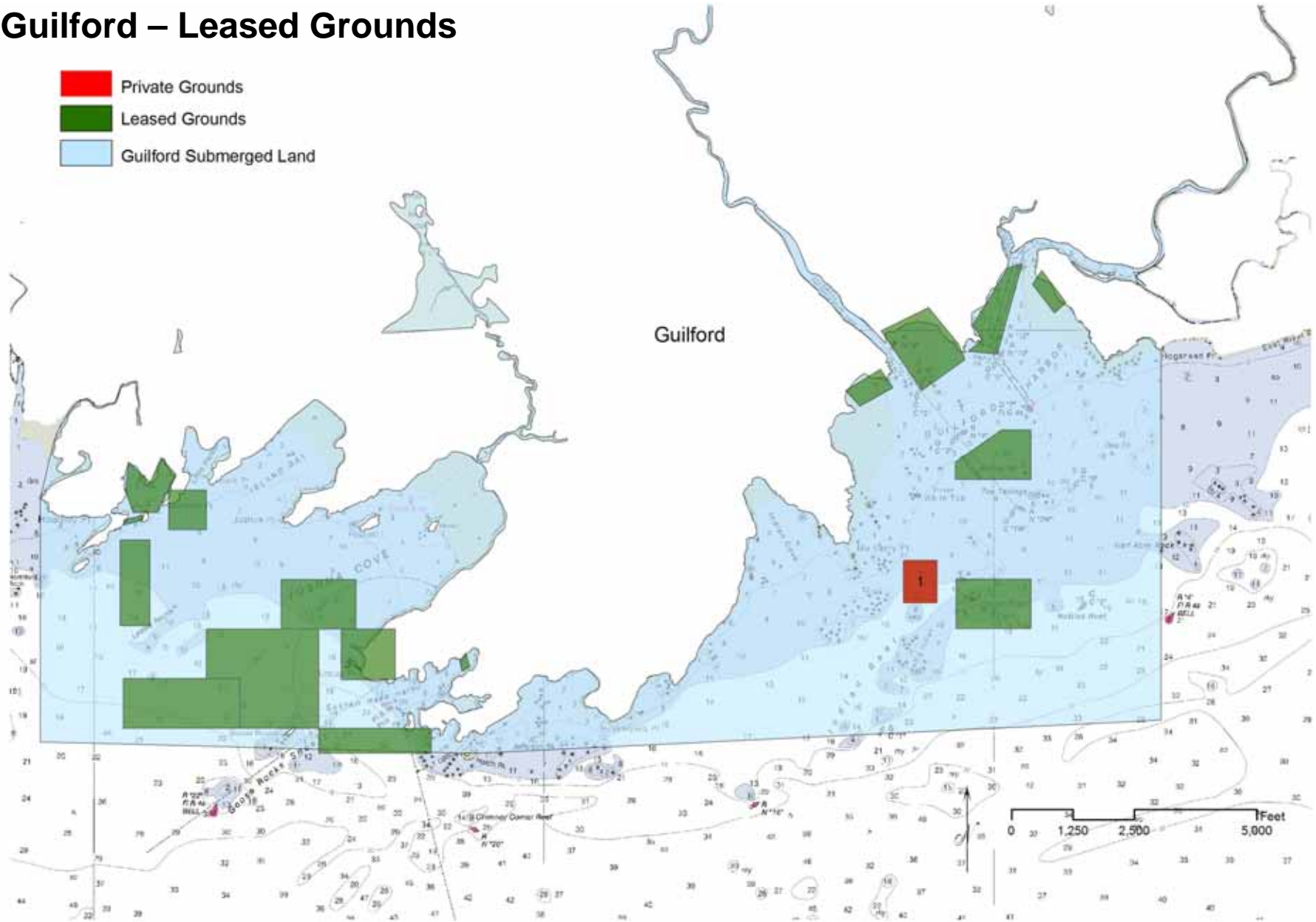


Leased Shellfish Grounds

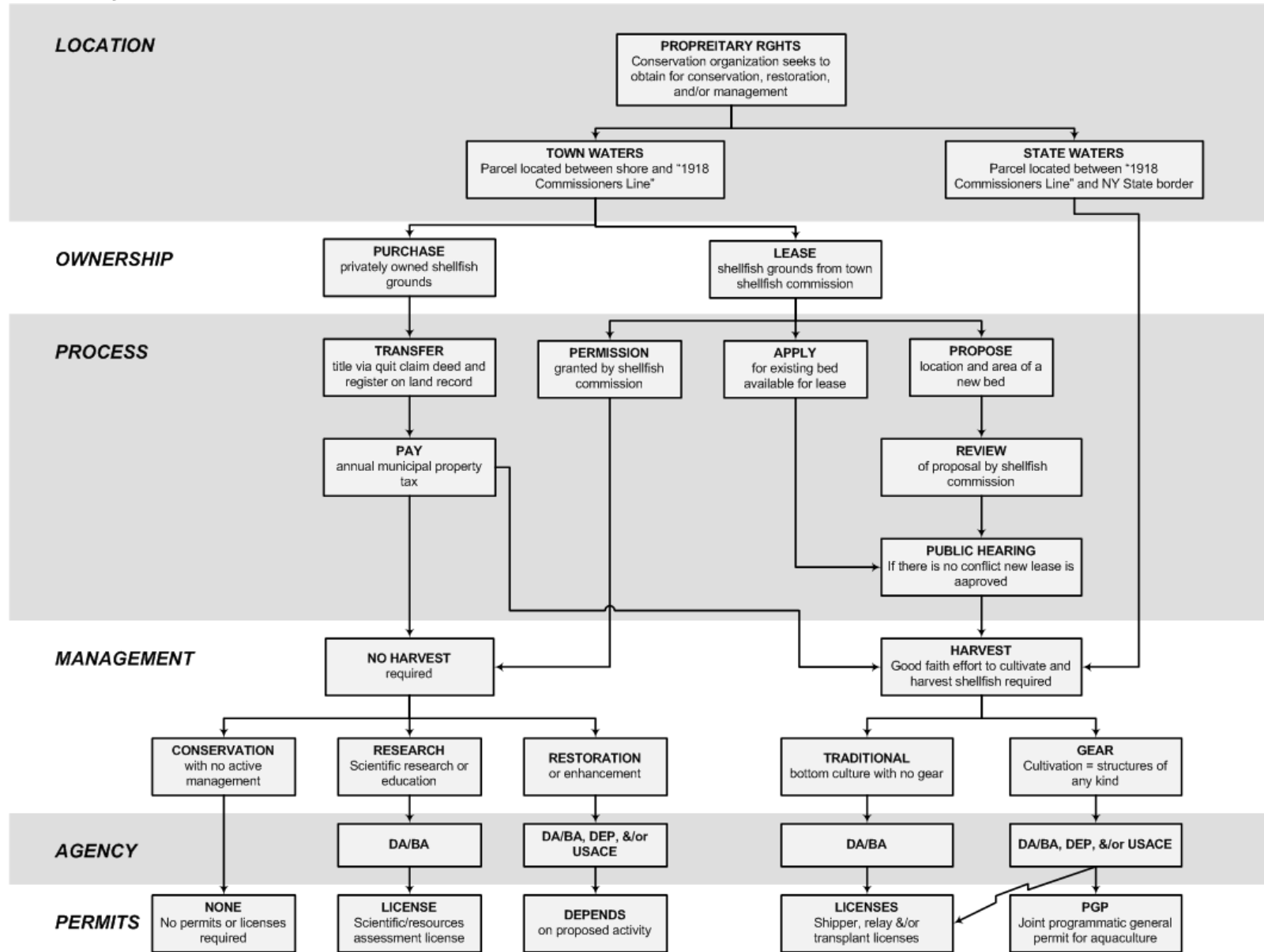
Town	<u>Study Area</u>		<u>Available for Lease</u>			<u>Leased</u>			
	acres	% of total	parcels	acres	% of total	parcels	acres	feet	% of total
Branford	4,241	31%	64	1,261	30%	31	613	0	14%
Guilford	2,827	21%	NA	2,498	88%	22	433	11,909	15%
Madison	5,362	39%	NA	UNK	UNK	4	0	UNK	0%
Clinton	1,180	9%	NA	0	0%	0	0	0	0%
Total	13,611	100%	64	3,759	28%	57	1,046	11,909	8%

Guilford – Leased Grounds

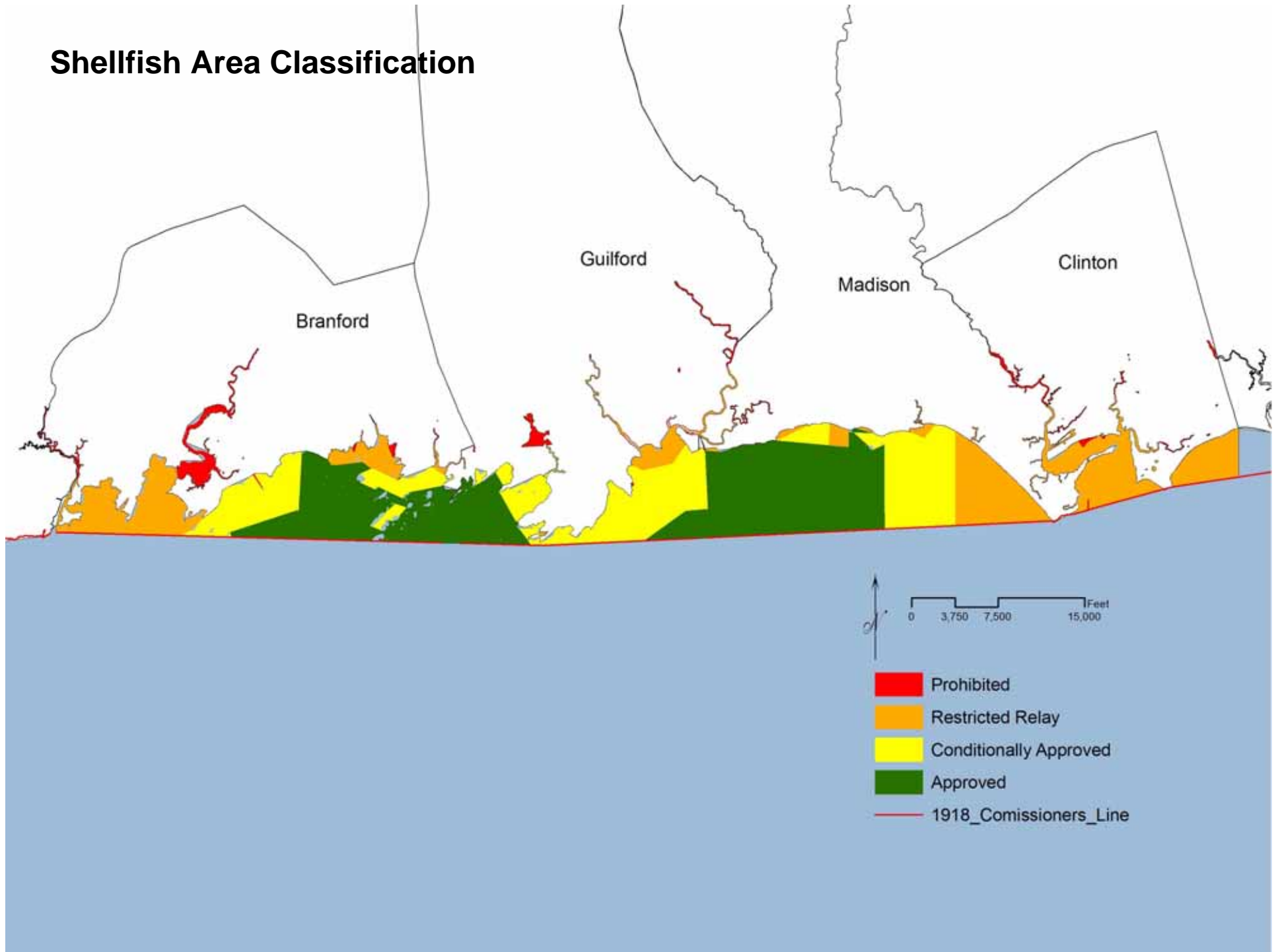
- Private Grounds
- Leased Grounds
- Guilford Submerged Land



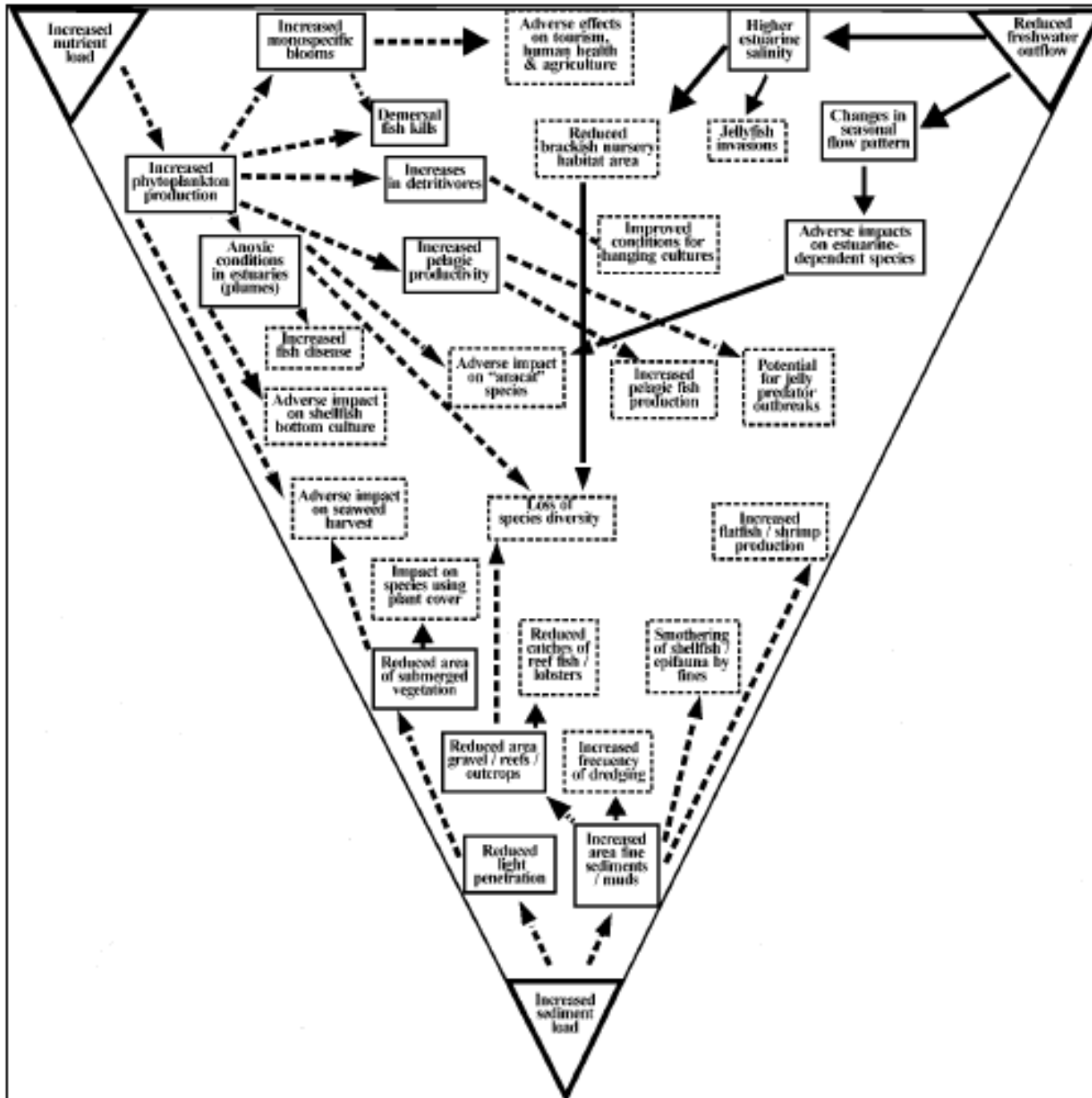
Regulatory Flow Chart



Shellfish Area Classification



**Bottom
Line =
Human
Impacts**



Source: Caddy 2003

Next Step: *Baseline Watershed Assessment and Habitat Management Plan*

Made possible by the McCance Foundation

