

Public Outreach on Lake Erie Energy Infrastructure

Tanya Cabala
**International Submerged
Lands Management
Conference 2008**

Great Lakes United

Union St-Laurent Grands Lacs

Presentation Overview

- Background
- Lake Erie Focus
- Research/Fact sheets
- Outreach
- Findings
- Recommendations



Background

- Lake Erie pipeline projects
 - **Millennium pipeline**
- Siting guidelines (2006)
- GLU opposition to pipelines carrying toxics, fuels sited in the Great Lakes (2006)



Why Focus on Lake Erie?

- East coast and Canadian energy markets
- Past proposals
- Shallowness
 - **Attractive for siting**
 - **More aquatic habitat available**



Research/Fact Sheets

- University of Buffalo Law Clinic
 - Research/analysis of legal framework
- “Layperson” fact sheets
 - Impacts, concerns for Lake Erie
 - Pipelines and cable laws for New York
 - Pipelines and cable laws for Ohio
 - Wind facility permitting in Ohio
 - Wind facility permitting in New York
 - Federal permitting



Outreach

- Focus groups (Ohio, New York)
 - Environmental/conservation groups, local officials, citizens, sportfishing interests, wind energy groups
- Purpose?
 - Assess information needs
 - “Test” fact sheets
 - Gauge interest level
 - Establish informal network
 - Solicit recommendations



Findings

- Assessing wind permits while opposing pipelines –
 - a big challenge
 - broaden subject
- Relevancy/application of laws is uncertain (i.e., public trust doctrine)
- Different frameworks, i.e., SEQRA in New York
- Politics
 - Multiplicity of players
 - Questions as to which will be more important



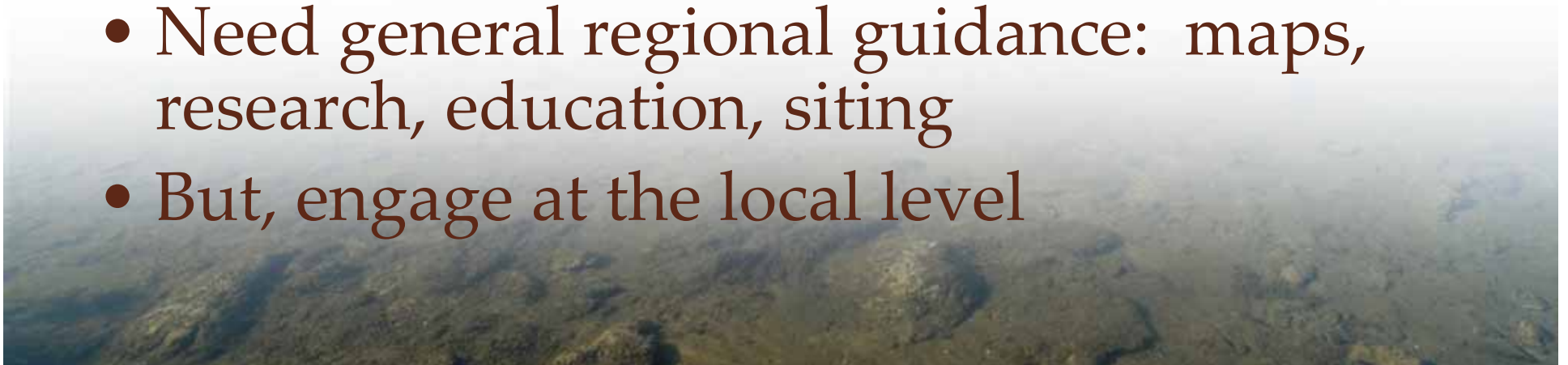
Recommendations

- Mapping: where can facilities be sited?
- Monitor for proposals: at minimum, keep list of wind projects (Great Lakes Wind Collaborative)
- Research (For example, issues specific to SEQRA review in New York)
- Public education (what are the issues, concerns, benefits?)



Summing Up

- Interest is high
- Challenge: Assessing pipelines, cables AND wind farms
- Wind farm issue needs to broaden beyond submerged land impacts; incorporate climate change
- Need general regional guidance: maps, research, education, siting
- But, engage at the local level





Contact

Tanya Cabala

231-981-0016

tcabala@charter.net